



GAT MONTHLY MEMBERSHIP PROGRESS REPORT

Results as of: 2/28/2022

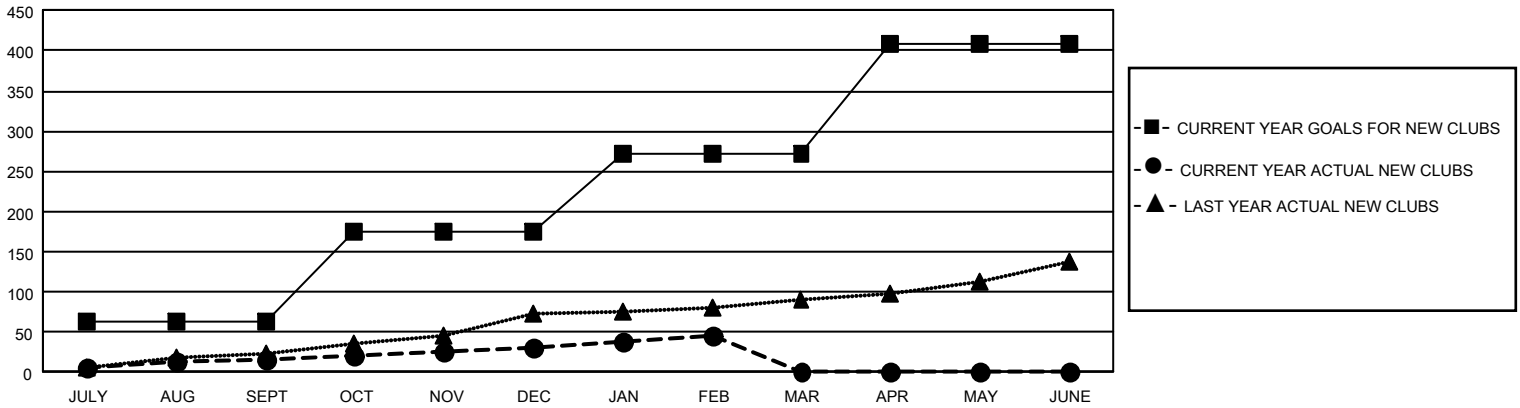
GAT Constitutional Area 1

REPORT DOES NOT INCLUDE CLUBS IN UNDISTRICTED AREAS.

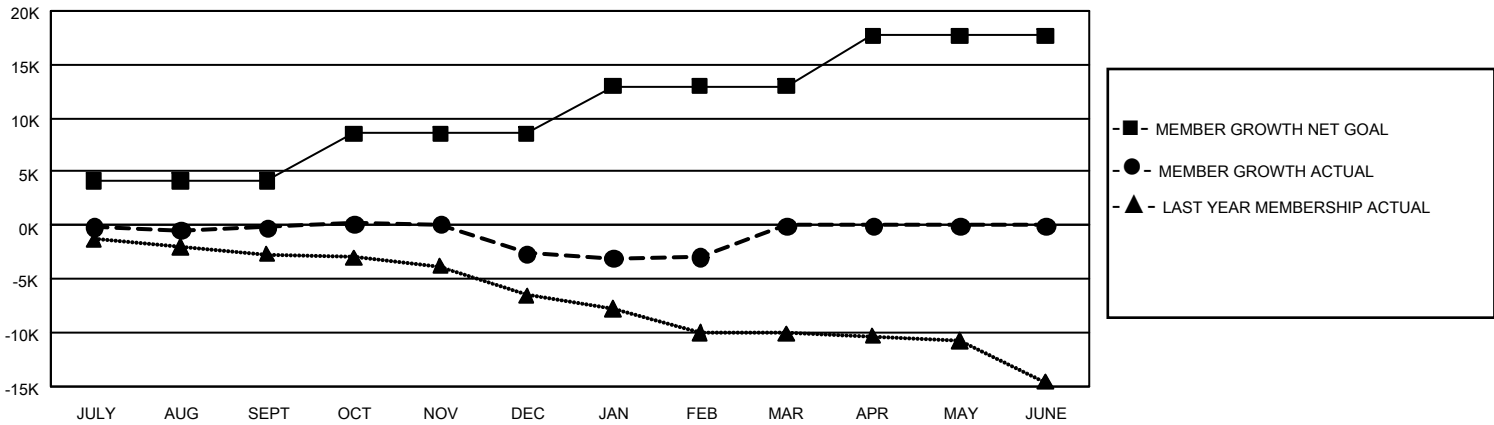
Clubs			
RESULTS FOR 2021-2022			
QUARTER	NEW CLUB GOAL	NEW CLUBS	DROPPED CLUBS
JULY/AUG/SEPT	192	16	127
OCT/NOV/DEC	330	16	114
JAN/FEB/MAR	294	14	43
APR/MAY/JUNE	411	0	0

Members			
RESULTS FOR 2021-2022			
QUARTER	MEMBER GROWTH NET GOAL	MEMBER GROWTH ACTUAL	DROPPED MEMBERS ACTUAL (including transfers)
JULY/AUG/SEPT	4133	8,772	7,719
OCT/NOV/DEC	4409	7,892	9,582
JAN/FEB/MAR	4451	5,141	4,808
APR/MAY/JUNE	4727	0	0

GOALS AND ACTUAL NEW CLUBS CUMULATIVE



GOALS AND ACTUAL MEMBERS CUMULATIVE



DROPPED CLUBS: 284	5,183 CLUBS OF 10,671 ADDED 1 OR MORE NEW MEMBERS	GENDER DISTRIBUTION
DROPPED MEMBERS		MALE 177,774 (65.06%) FEMALE 95,435 (34.92%) NON BINARY 4 (0.00%) PREFER NOT TO ANSWER 48 (0.02%)
DECEASED 3,367	CLICK HERE FOR CUMULATIVE MEMBERSHIP DATA	TOTAL FAMILY UNIT MEMBERS 52,594
CLUB CANCELLED 2,078		FAMILY MEMBERS PAYING HALF DUES 27,034
OTHER 16,661		
TOTAL 22,106		